

1

2

3

4

A

B

C

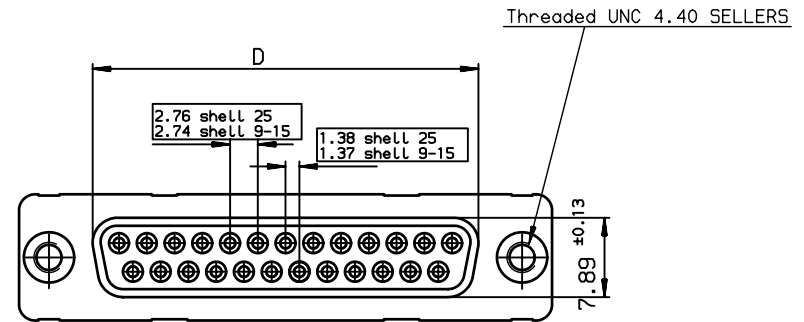
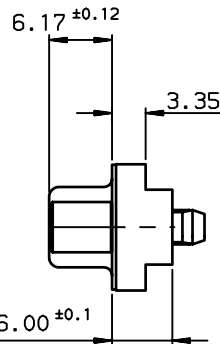
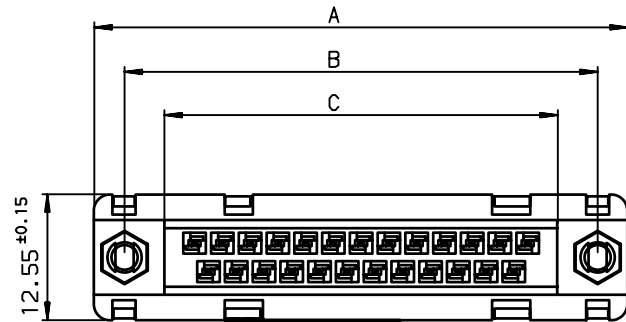
D

A

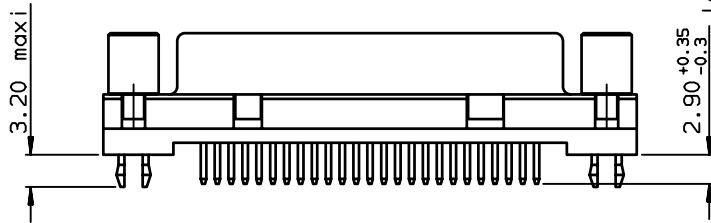
B

C

D

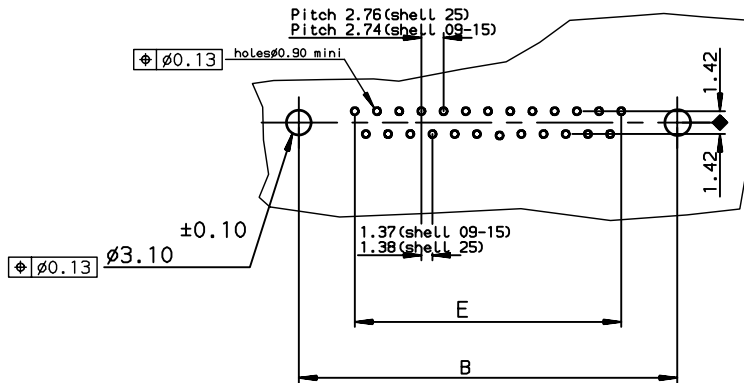


SHELL	A ± 0.38	B ± 0.12	C ± 0.10	D ± 0.25	E ± 0.07
09	30.81	24.99	16.96	16.21	10.96
15	39.14	33.32	25.18	24.54	19.18
25	53.03	47.04	39.12	38.25	33.12



Core range					
SHELL	TIN LEAD P/N	LEAD FREE P/N	DESIGNATIONS		
09	D09S24A4GV00	D09S24A4GV00LF	RECEPTACLE 9 CTS STRAIGHT-SOLDER TO BOARD-PCB HARPOON-SCREWLOCK UNC 4.40-ELEC.CONTIN.-PERFORM. LEVEL PL3		
15	D15S24A4GV00	D15S24A4GV00LF	RECEPTACLE 15 CTS STRAIGHT-SOLDER TO BOARD-PCB HARPOON-SCREWLOCK UNC 4.40-ELEC.CONTIN.-PERFORM. LEVEL PL3		
25	D25S24A4GV00	D25S24A4GV00LF	RECEPTACLE 25 CTS STRAIGHT-SOLDER TO BOARD-PCB HARPOON-SCREWLOCK UNC 4.40-ELEC.CONTIN.-PERFORM. LEVEL PL3		

PC card drilling dimensions(after plating)
(thickness 1.60±0.20mm)



GENERAL CHARACTERISTICS AND ROHS INFORMATIONS:
SEE DRAWING C01-8646-0000

European Views

www.fciconnect.com		surface ISO 1302 ✓	tolerance std ISO 406 ISO 1101	projection mm
TOLERANCES UNLESS OTHERWISE SPECIFIED				
ANGULAR	LINEAR	0.X	±0.1	size A3
0.XX	±2'	0.XX	±0.1	Scale 2
0.XXX	±0.1	0.XXX	±0.1	ECN LS06-0097
Product family			D-SUB	Spec ref -
Dr	JOUBERT	2000/12/21		
Eng	PESSON	2000/12/21		
Chr	LEGARE	2000/12/21		
Appr	LEGARE	2000/12/21		
Rev.	title RECEPTACLE STD EUROPE		Rev. G	
dwg no	C01-8646-0752		sheet 1 of 1	
catalog no	-		CUSTOMER	

rev	ecn no	dr	date
D	-	SBA	2003/04/16
E	LS05-001	MPE	2005/03/14
F	-	-	-
G	LS06-0097	LGO	2006/07/28
-	-	-	-
-	-	-	-
-	-	-	-

REV F - 2006-04-17

1

2

3

4

Copyright FCI. FCJ

[G17S1500110EU](#)
[L717SDB25P](#)
[LD09P33E4GV00LF](#)
[G17S0900110EU](#)
[L717SDE09P](#)
[G17S1510110EU](#)
[MDBE09PE860](#)
[L77DE09S](#)
[D09P33E4GV00LF](#)
[DAP15P065TXLF](#)
[17EBH-015-S-AM-0-10](#)
[17EHD-044-P-AA-0-00](#)
[17EHD-026-P-AA-0-00](#)
[D25S24A4GV00LF](#)
[D09S24A4GV00LF](#)
[D09P24A4GV00LF](#)
[D15S24A4GV00LF](#)
[D09P33E4GV00LF](#)
[10090929-S154VLF](#)
[ICD15S13E6GV00LF](#)
[17EHD-015-P-AA-0-00](#)
[DA15P064TXLF](#)
[DE09P064TXLF](#)
[DE09S064TLF](#)
[L77SDE09S](#)
[10090769-P154ALF](#)